

Somia Abdelbaset Abdullah

Contacts

+905342594698

somiaabdelbaset9@gmail.com

Kristal sehir.

Education Qualifications

Bachelor's degree in Architectural Engineering Equivalent certificate from University of Wales (UK)

- **University:** Modern university for technology and information (MTI)
- **Grade:** Very Good (B+) **GPA** 3.07 \ 4.00
- **Graduation project:** Culinary Arts Education Center with **Grade (B+)**
- **Premium Project:** Center for Fashion and Arts in Nubia with **Grade A**
- **Duration:** Sep 2011 – July 2016

Experience

• **Maalem Group For Development And Reconstruction**

Duration: March 2018 – Aug 2022

Job Duties: Technical Office Architect performing the following works:

- Architectural Design
- Shop Drawings
- Professional Architectural Outputs for Plans Using Photoshop (Coloring - Furniture)
- Supervising Finishing Works Such As (Masonry Works - Paintings - Exteriors - Interiors...etc.)
- Interacting with clients to perform their architectural requests and manage it through the plans.
- Figuring out architectural solutions for integrity between both architectural and structural plans to approach the best conformity.
- Quantity survey using professional excel sheets for architectural works.

• **Freelance work**

Duration: Jun 2016 – March 2018.

Job Duties: Performing the following works:

- Interior shot using 3ds Max
- 3D Plans using 3ds Max
- Architectural Design
- Gypsum board Design
- Electrical drawings
- Residential plumbing drawings

Courses

- **3ds Max**
Place: Cad Masters
- **Revit Architectural**
Place: Cad Masters
- **Free Hand Presentation**
Place: Cad Masters

Skills

● **Technical skills**

- AutoCAD
- Revit
- Microsoft Office
- Adobe Photoshop
- 3ds Max

● **Language Skills**

English: Good

Personal Details

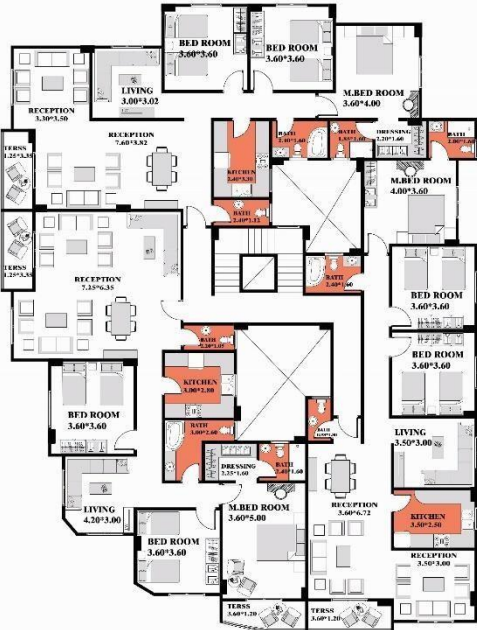
DOB: 30/01/1993

Address: KIRSTAL SEHIR, ESENYURT, ISTANBUL.

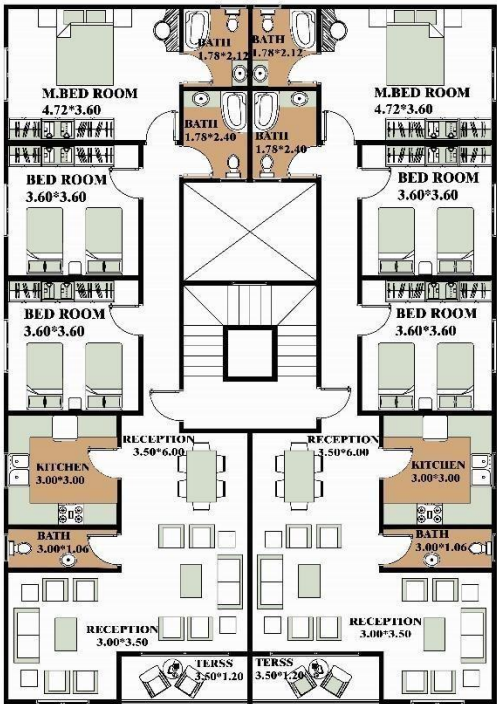
Marital Status: Married

- **Reference available upon request.**

Architectural Design



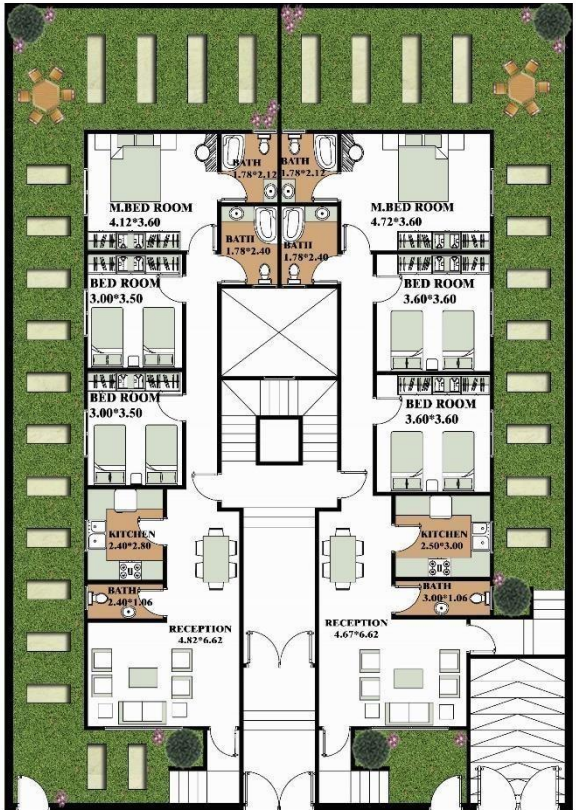
TYPICAL FLOOR



TYPICAL FLOOR



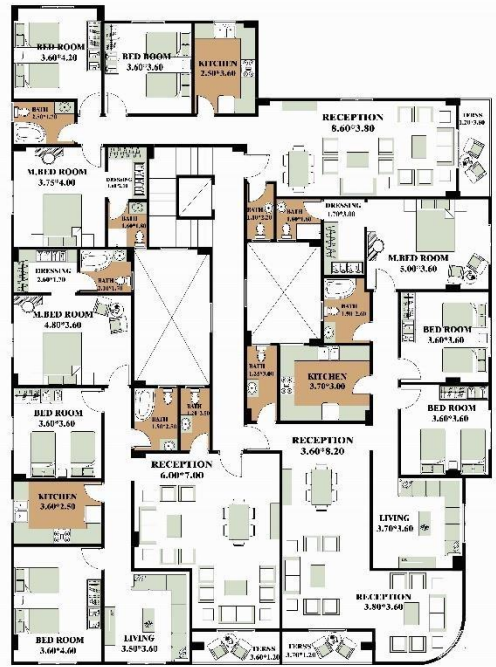
GROUND FLOOR



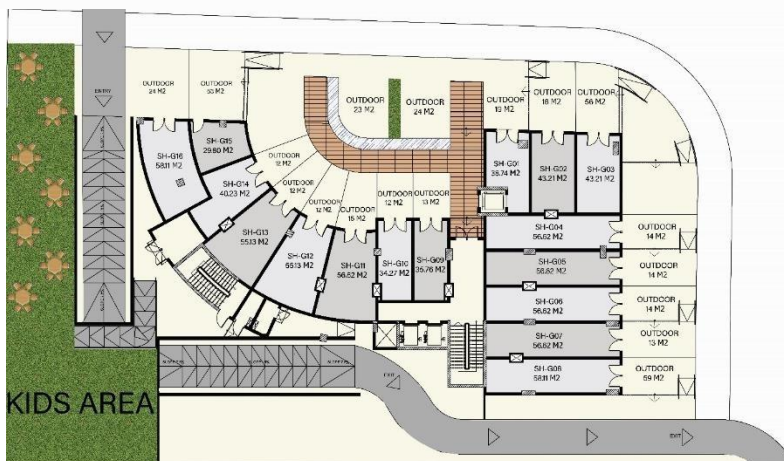
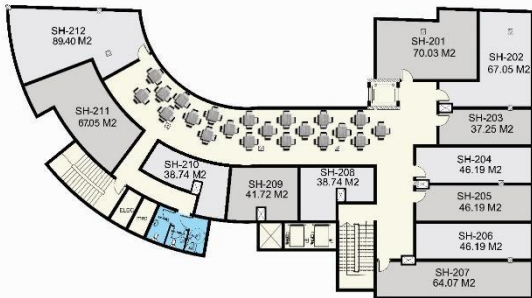
GROUND FLOOR



GROUND FLOOR



TYPICAL FLOOR



KIDS AREA



TYPICAL FLOOR



GROUND FLOOR

TYPE (1)
APARTMENT
TYPICAL FLOOR
180 M²



RECEPTION 1	6.75*4.00
RECEPTION 2	7.60*3.60
KITCHEN	3.00*2.60
BATHROOM 1	1.56*2.60
TOLLET	2.06*1.30
BED ROOM 1	3.60*3.60
BED ROOM 2	3.60*4.82
M.BED ROOM	4.00*4.00
BATHROOM 2	1.70*1.70
DRESSING	2.18*1.70
LOBBY	1.10*2.40
TERRACE	2.04*2.02
CORRIDIOR	3.72*1.10

TYPE (1)
APARTMENT
GROUND FLOOR
160 M²
GARDEN 112 M²



DINNING	4.00*3.60
RECEPTION	3.60*6.62
KITCHEN	2.62*2.60
TOLLET	1.10*2.38
BATHROOM	1.20*2.26
CORRIDIOR	1.82*1.24
LOBBY	1.22*1.10
	3.60*3.63
BED ROOM ₂	3.60*3.62
M.BED ROOM	4.00*3.60
LIVING	3.30*3.63

TYPE (2)
APARTMENT
TYPICAL FLOOR
165 M²



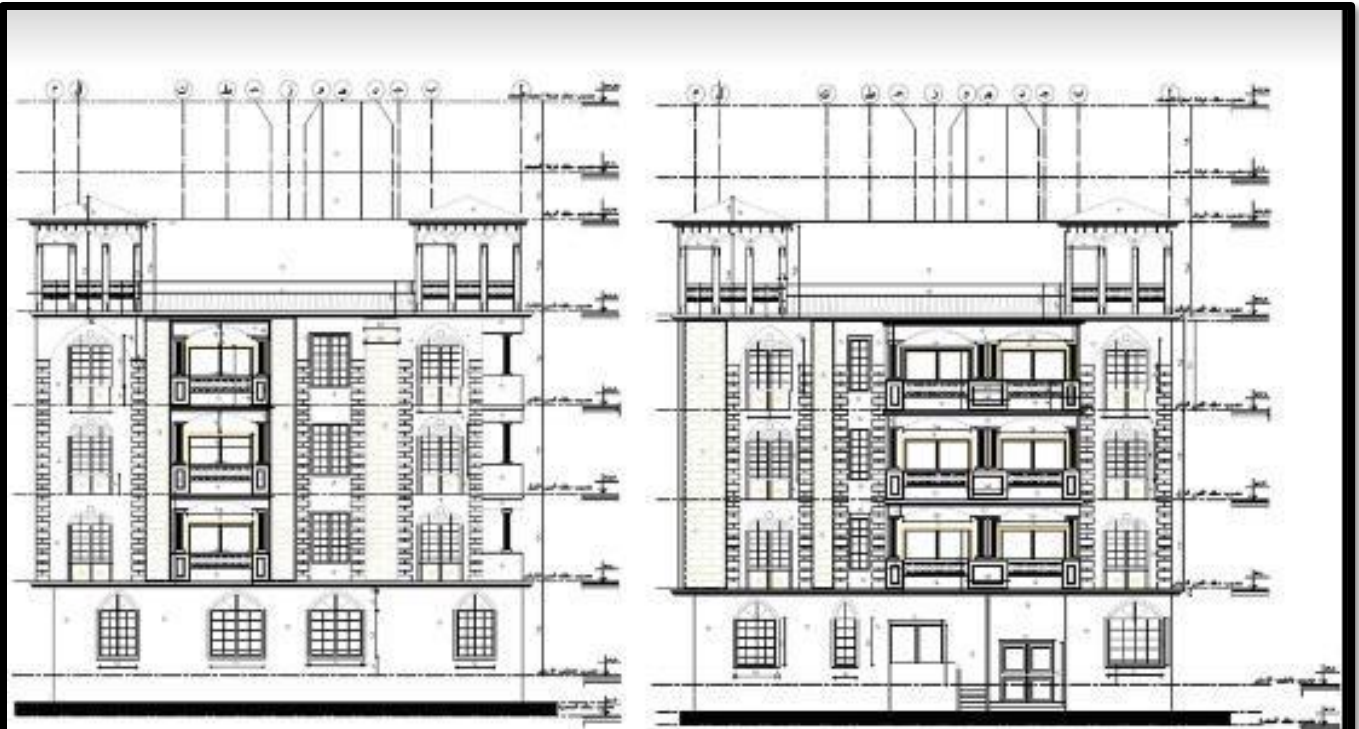
RECEPTION	6.00*4.87
LIVING	3.01*2.48
KITCHEN	2.90*2.51
TOLLET	1.02*3.63
BATHROOM ₁	2.69*2.24
BED ROOM ₁	3.60*3.60
BED ROOM ₂	3.60*3.60
M.BED ROOM	3.60*3.60
BATHROOM 2	1.73*1.64
DRESSING	1.73*1.84
LOBBY	2.64*2.24
TERRACE ₁	1.30*4.87
TERRACE ₂	2.02*1.00

TYPE (2)
APARTMENT
GROUND FLOOR
150 M²
GARDEN 81 M²



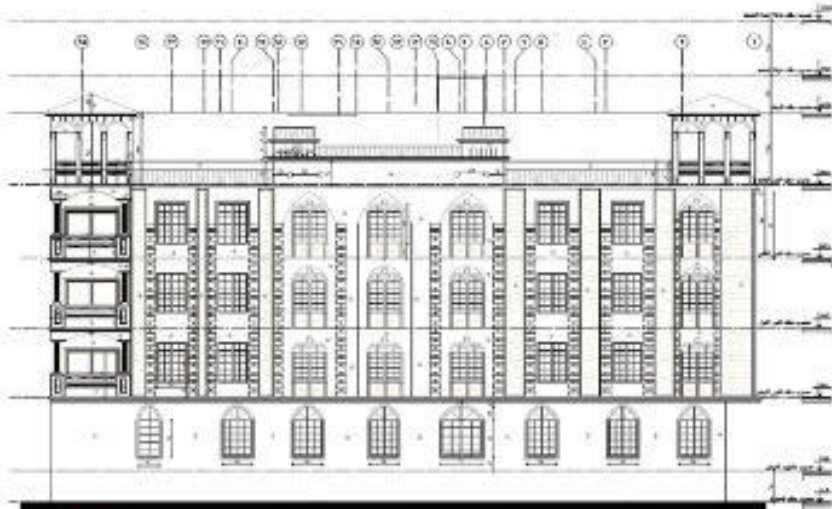
LOBBY ₁	1.22*1.00
RECEPTION	7.91*3.60
KITCHEN	3.07*2.70
TOLLET	1.60*1.11
BATHROOM	3.02*1.83
CORRIDIOR	1.10*3.74
LOBBY ₂	1.30*1.02
BED ROOM ₁	3.50*3.50
BED ROOM ₂	3.60*4.00
M.BED ROOM	4.07*3.63
DRESSING	1.80*2.00
BATHROOM 2	1.80*1.54

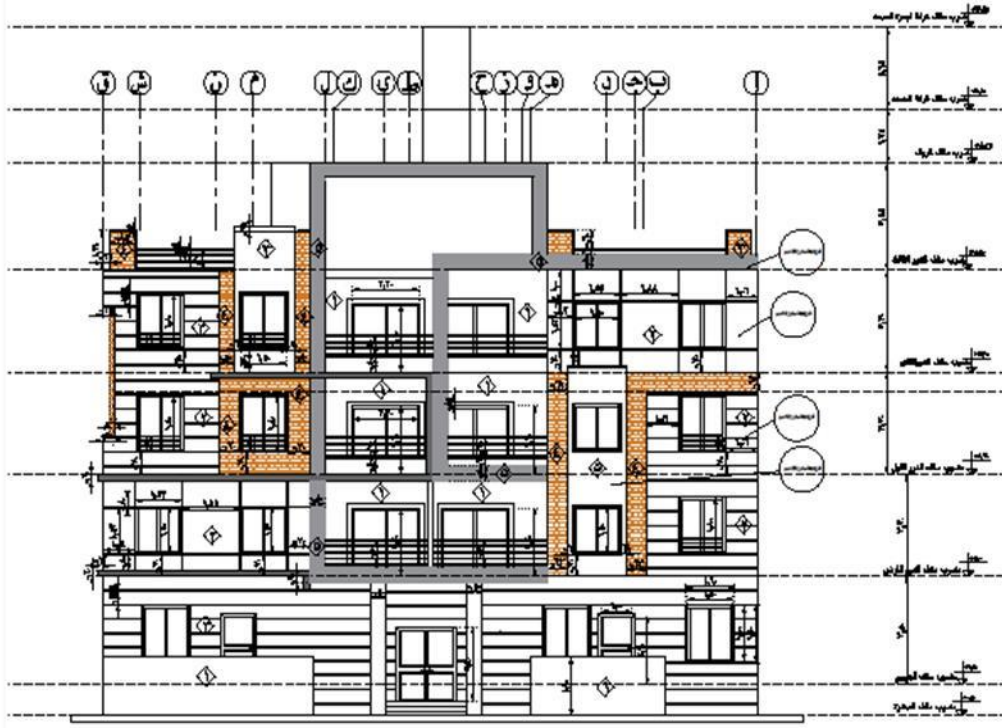
Shop Drawing



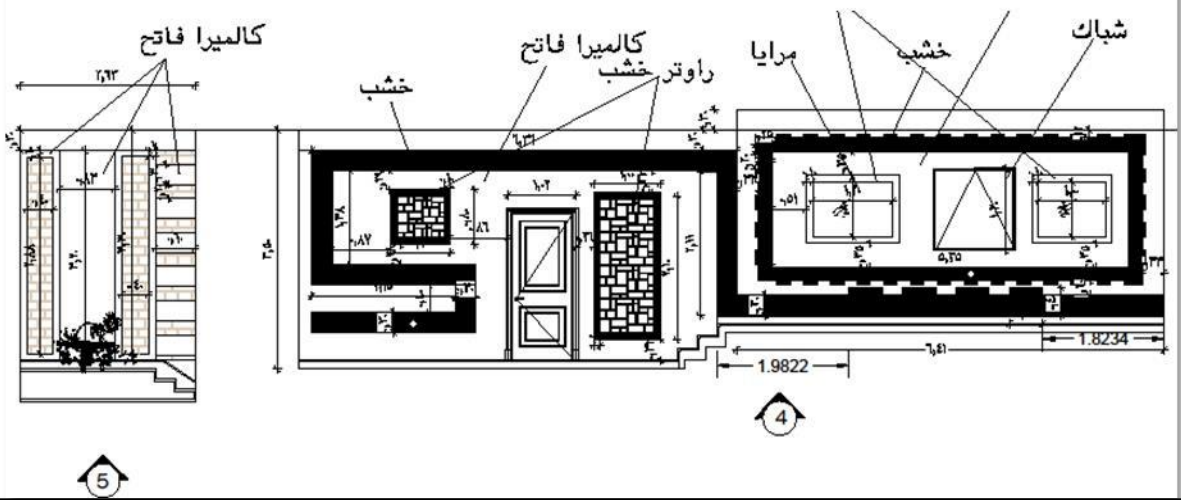
معلومات عامة	
رقم المشروع	1000
تاريخ	2023
موقع	الرياض

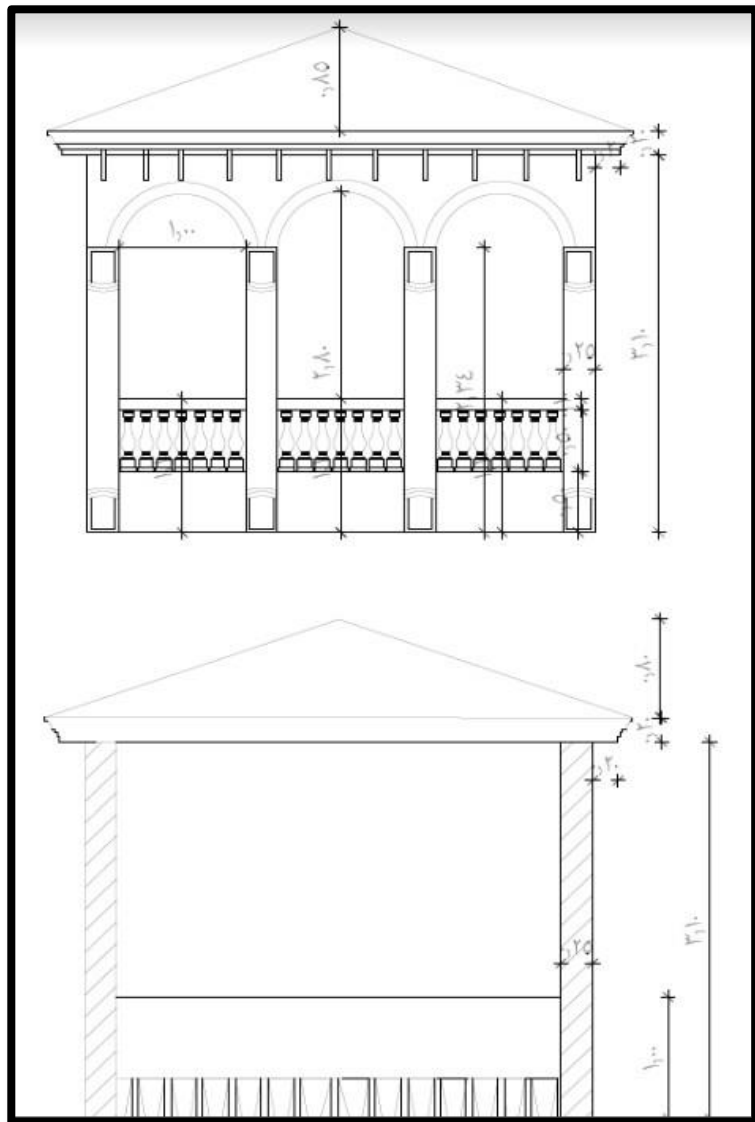
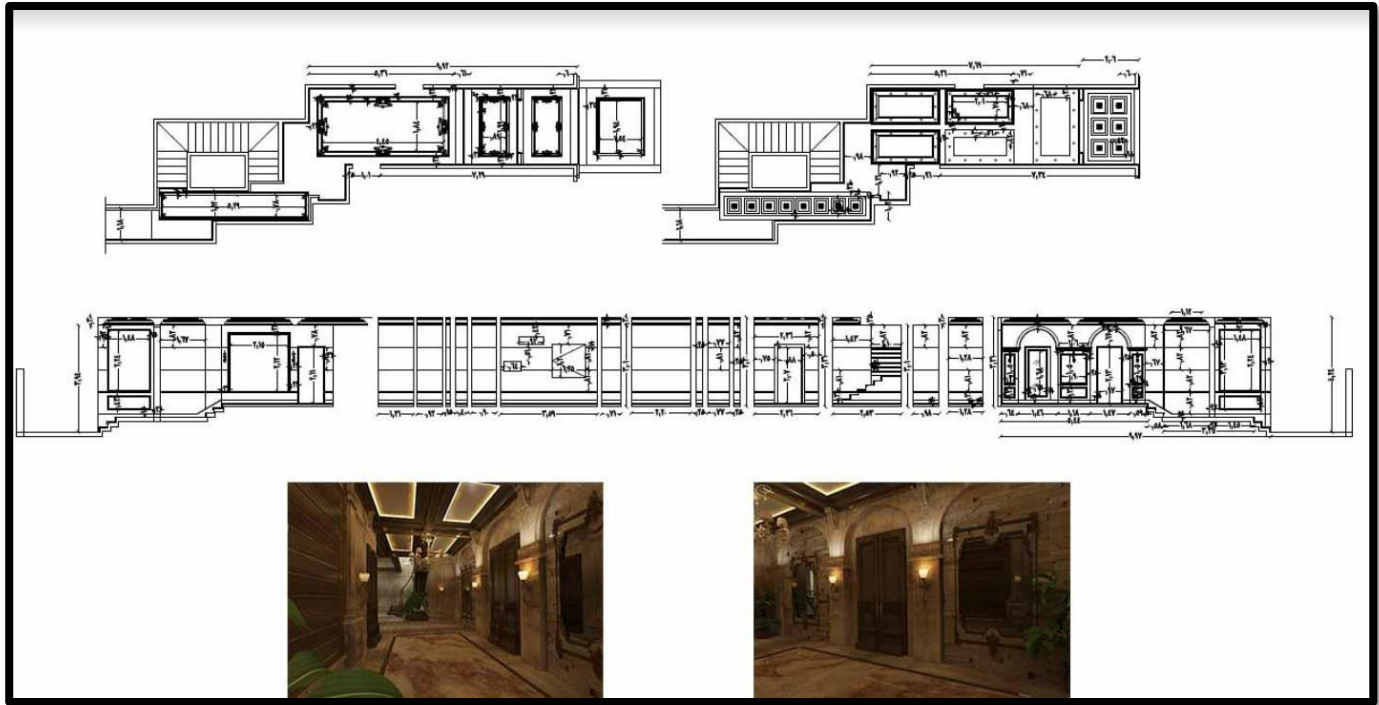
معلومات عامة	
رقم المشروع	1000
تاريخ	2023
موقع	الرياض

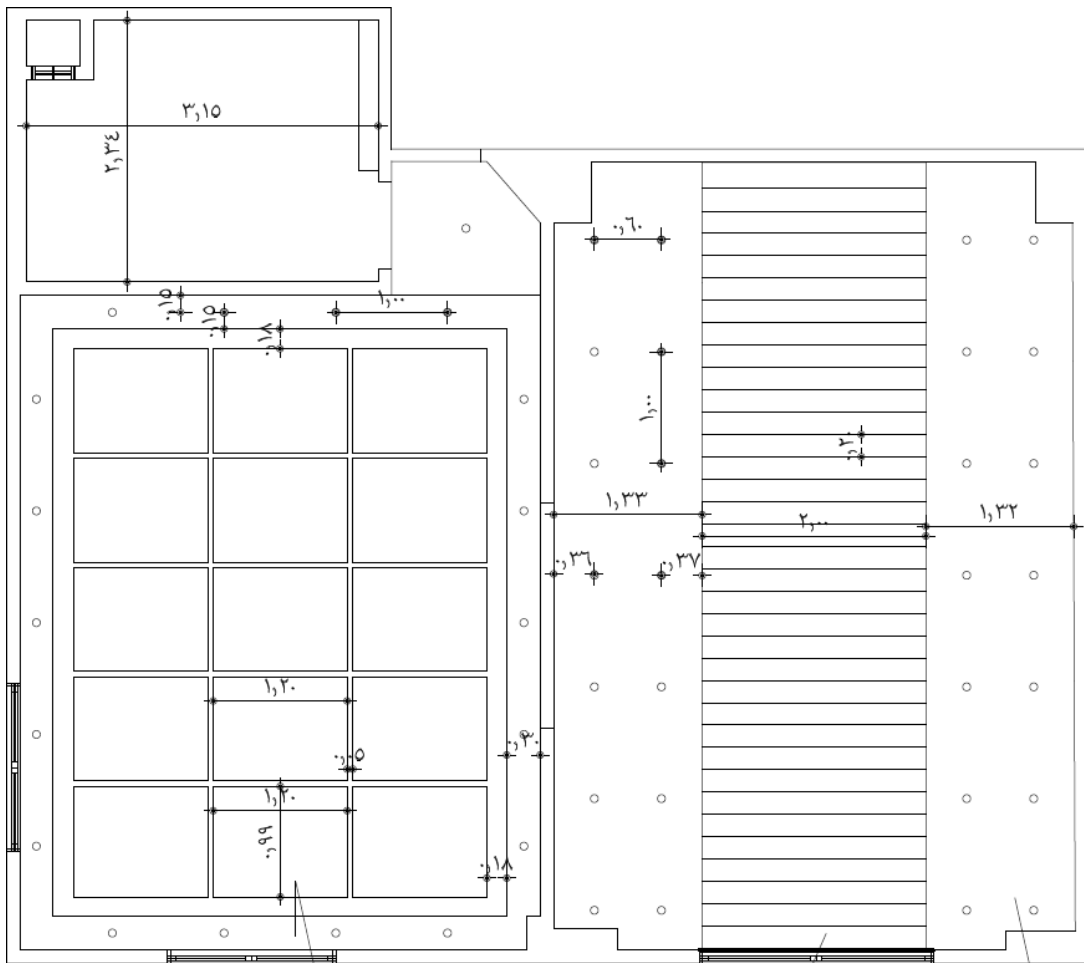




رمز	جدول متطلبات الواجهات
⬇	دعان بلاستيك خارجي نوع فايف
⬇	دعان بلاستيك خارجي نوع فايف
⬇	دعان بلاستيك خارجي رماني فايف
⬇	حجر رمي
⬇	دعان بلاستيك خارجي رماني فايف

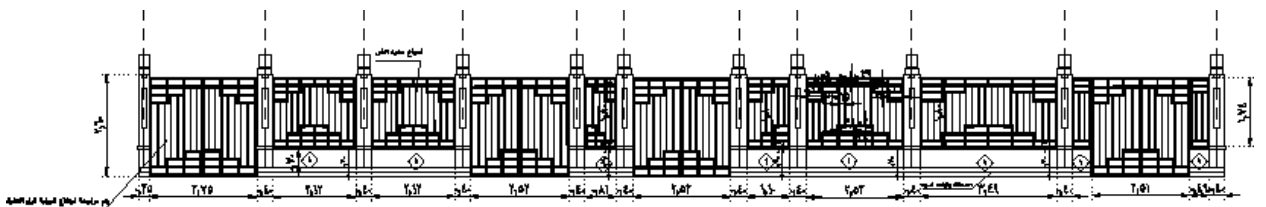
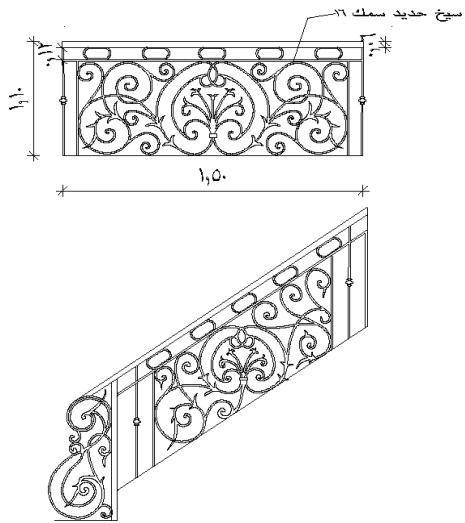
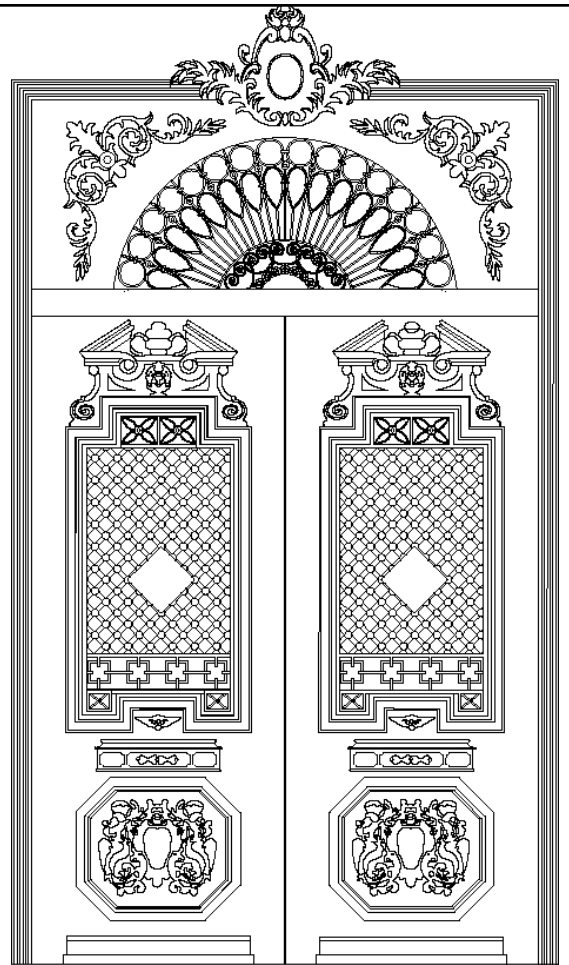
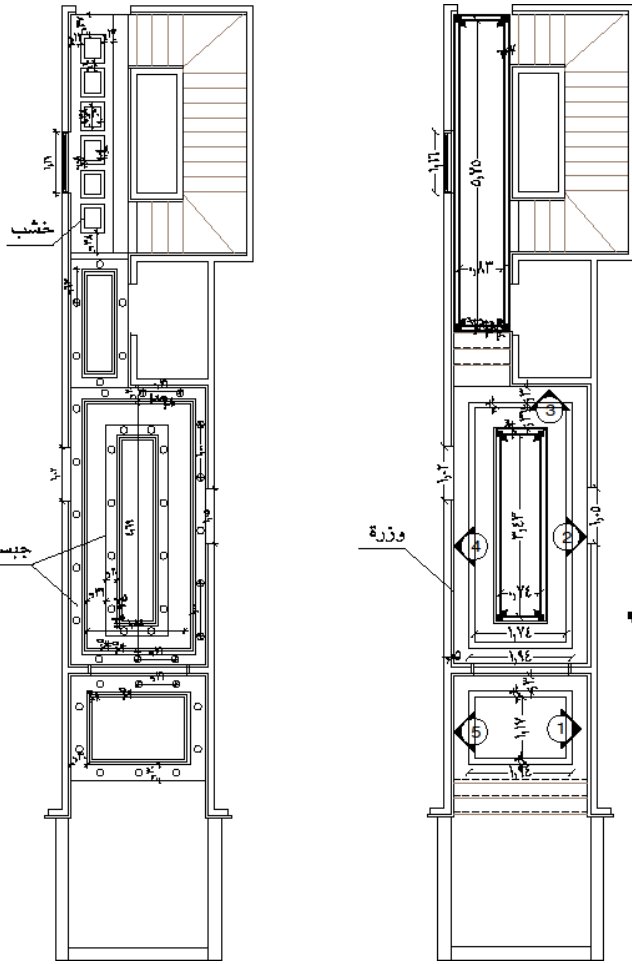




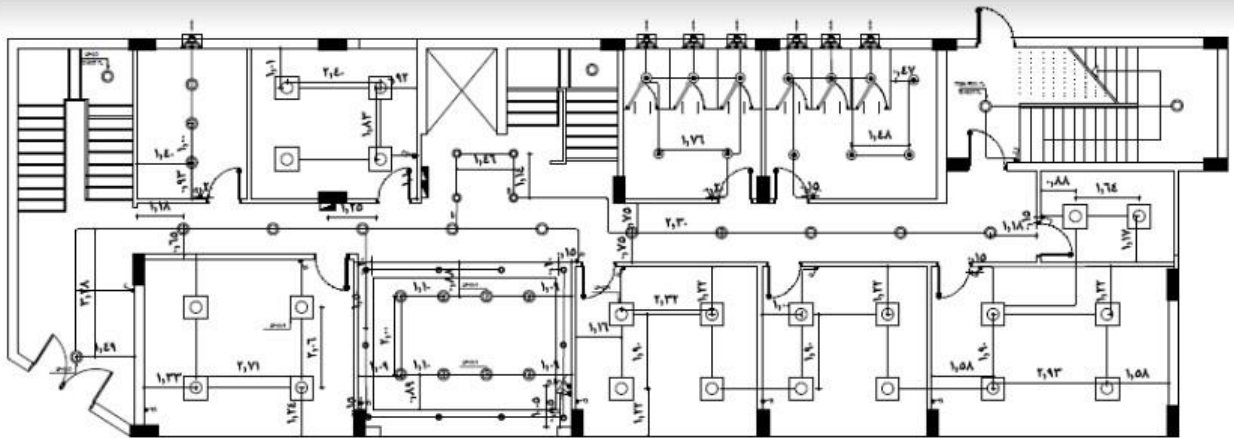


چسبون بورد خشب

چسبون بورد

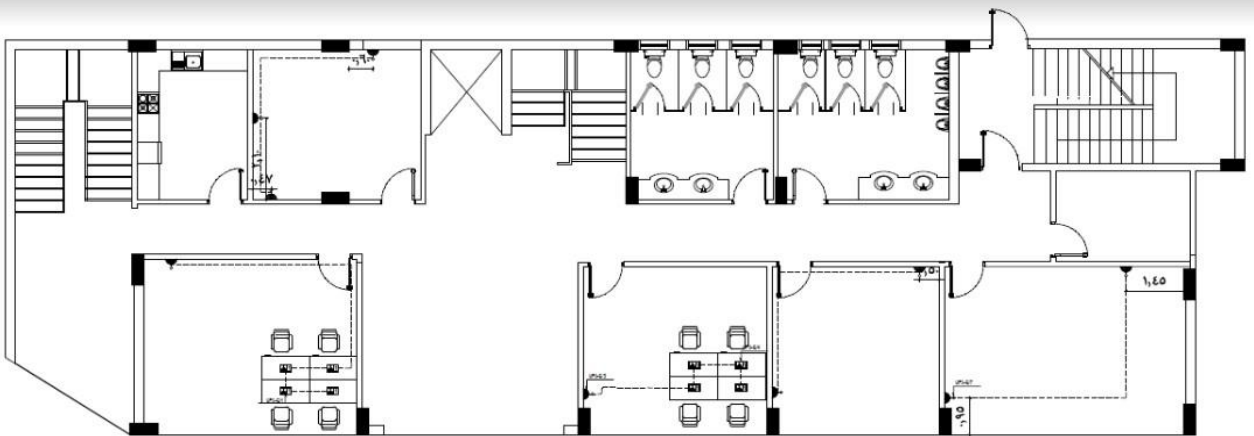


Electrical drawing for watanya mall



الدور الارضى

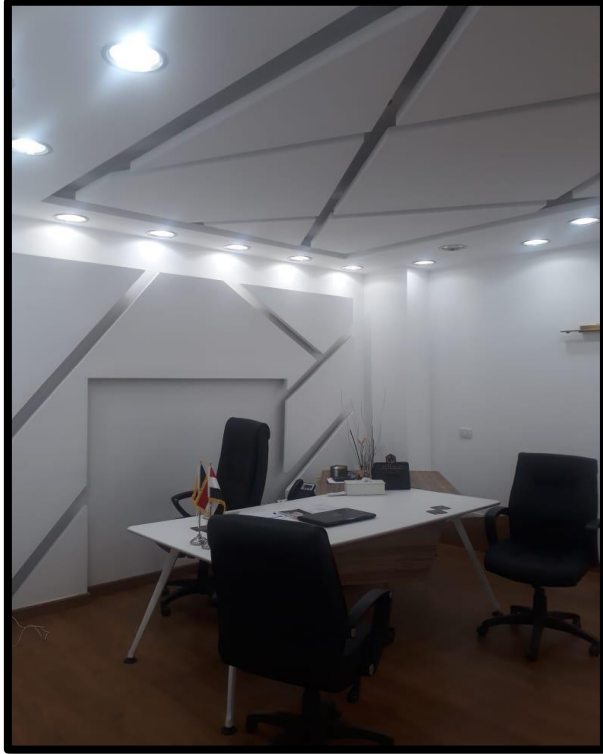
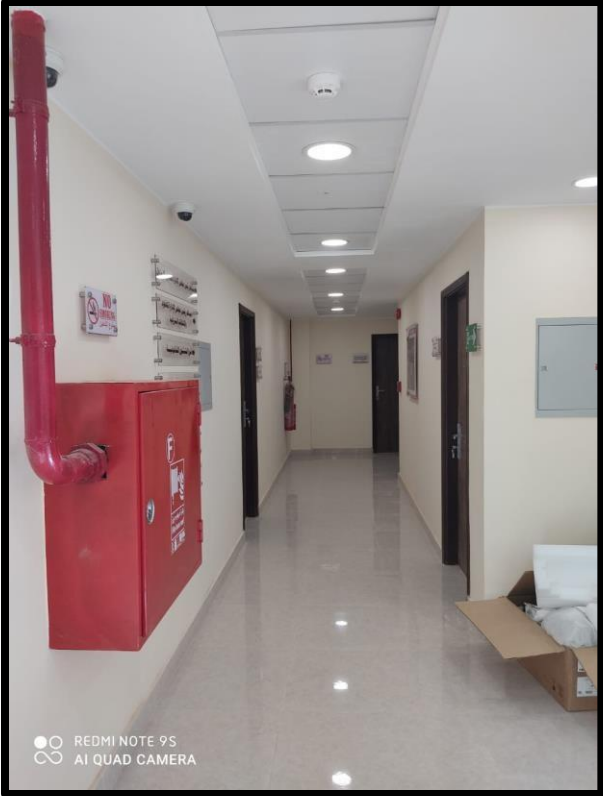
TYPE	SYMBOLS	DESCRIPTION
F1		LED LIGHTING FITTING WITH DARK MIRROR PARABOLIC ALUMINUM LOUVER 4x18W, IP54, SURFACE/RECESSED MOUNTED. 60x60
F2		LED LIGHTING FITTING WITH DARK MIRROR PARABOLIC ALUMINUM LOUVER 4x18W, IP54, SURFACE/RECESSED MOUNTED.
S1		LED SPOT LIGHT FITTING, RECESSED MOUNTED 20CM
S2		LED SPOT LIGHT FITTING, RECESSED MOUNTED 15CM
S3		LED SPOT LIGHT FITTING, RECESSED MOUNTED 7CM



الدور الارضى

TYPE	SYMBOLS	DESCRIPTION
S01		250V- 16A, CONVENIENCE SOCKET OUTLET, 2P+E, FLUSH MOUNTED WITH SAFETY SHUTTERS, AND SIDE EARTH CONTACT (SCHUKO TYPE)
S02		250V- 20A, CONVENIENCE SOCKET OUTLET, 2P+E, FLUSH MOUNTED WITH SAFETY SHUTTERS, AND SIDE EARTH CONTACT (SCHUKO TYPE) BUT WEATHERPROOF TYPE, IP54.
S03		250V- 16A, CONVENIENCE SOCKET OUTLET, 2P+E, FLUSH MOUNTED WITH SAFETY SHUTTERS, AND SIDE EARTH CONTACT (SCHUKO TYPE) BUT ORANGE COLOR UPS SYSTEMS

Some for shop drawing that have been implemented



3D PLAN



Interior Shot



Center for Fashion and Arts in Nubia

